



The control stations XAWFS, made in stainless steel AISI 316L, are equipped with our extensive range of robust and flexible control and signalling units HarmAtex.

They combine the functions start and stop for motors, fans, pumps ..., and they can be provided with measuring instruments for current control, voltage or other physical quantities.

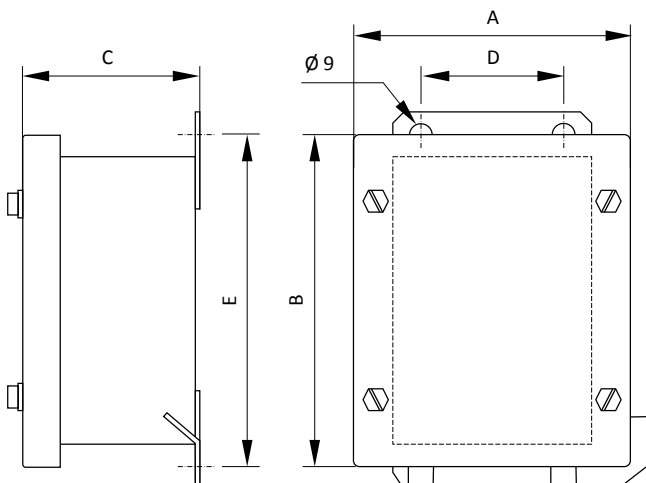
The functions can be predefined or determined according to the requirement of the application. Up to 52 control and signalling units can be installed on the XAWFS control units.

### TECHNICAL DATA

<b>Material</b>	Stainless steel AISI 316L
<b>IP rating</b>	IP65 according to EN/IEC 60529
<b>Temperature range</b>	-20°C ... +40°C or +50°C or +60°C
<b>Certificate</b>	INERIS 03ATEX0122X
<b>Marking</b>	II 2 GD Ex e IIC T6...T4 Gb Ex e mb IIC T6...T4 Gb Ex d e IIC T6...T4 Gb Ex d e mb IIC T6...T4 Gb Ex tb IIIC T85°C ... T135°C Db
<b>Features of the contact block</b>	Ith = 10 A; Ui = 415 V  AC Ue = 380 V; Ie = 1,9 A or Ue = 240 V; Ie = 3 A or Ue = 120 V; Ie = 6 A  DC Ue = 250 V; Ie = 0,27 A or Ue = 125 V; Ie = 0,55 A or Ue = 24 V; Ie = 2,87 A
<b>Features of the LED pilot light</b>	Rated voltage 24 ... 254 V AC/DC Maximal current 2 ... 10 mA
<b>Mechanical endurance of the push buttons</b>	Head: 5 million operations - Contact block: 1 million operations

Product code	Actuator	Colour	Label	Contact
XAWFS10	1 x Push button, spring to return	● Green	Start	1NO
XAWFS11	1 x Push button, spring to return	● Red	Stop	1NC
XAWFS16	1 x Mushroom, spring to return - Ø 40 mm	● Red	Emergency stop	1NC
XAWFS15	1 x Mushroom, Push-Pull - Ø 40 mm	● Red	Emergency stop	1NC
XAWFS17	1 x Mushroom, turn to release - Ø 40 mm	● Red	Emergency stop	1NC
XAWFS172	1 x Mushroom, release by key - Ø 40 mm	● Red	Emergency stop	1NC
XAWFS13	1 x Selector switch, 2 stay put	● Black	Start - Stop	1NO
XAWFS132	1 x Selector switch, 2 stay put	● Black	Manu - Auto	1NO+1NC
XAWFS133	1 x Selector switch, 2 stay put	● Black	0-I	1NO+1NC
XAWFS12	1 x Selector switch, 3 stay put	● Black	I-0-II	1NO+1NC
XAWFS121	1 x Selector switch, 3 spring return to center	● Black	I-0-II	1NO+1NC
XAWFS122	1 x Selector switch, key withdrawal in 3 positions	● Black	I-0-II	1NO+1NC
XAWFS143	1 x Pilot light, integral LED - 24 to 254 V AC-DC	● Green	Blank	-
XAWFS144	1 x Pilot light, integral LED - 24 to 254 V AC-DC	● Red	Blank	-
XAWFS147	1 x Pilot light, integral LED - 24 to 254 V AC-DC	○ White	Blank	-
XAWFS146	1 x Pilot light, integral LED - 24 to 254 V AC-DC	● Blue	Blank	-
XAWFS145	1 x Pilot light, integral LED - 24 to 254 V AC-DC	● Yellow	Blank	-

Product code	Actuator	Colour	Label	Contact
XAWFS21	1 x Push button, spring to return	● Green	Start	1NO
	1 x Push button, spring to return	● Red	Stop	1NC
XAWFS26	1 x Push button, spring to return	● Green	Start	1NO
	1 x Mushroom, spring to return - Ø 40 mm	● Red	Emergency stop	1NC
XAWFS25	1 x Push button, spring to return	● Green	Start	1NO
	1 x Mushroom, Push-Pull - Ø 40 mm	● Red	Emergency stop	1NC
XAWFS27	1 x Push button, spring to return	● Green	Start	1NO
	1 x Mushroom, turn to release - Ø 40 mm	● Red	Emergency stop	1NC
XAWFS272	1 x Push button, spring to return	● Green	Start	1NO
	1 x Mushroom, release by key - Ø 40 mm	● Red	Emergency stop	1NC
XAWFS24	1 x Push button, spring to return	● Green	Start	1NO
	1 x Pilot light, integral LED - 24 to 254 V AC-DC	● Green	Blank	-
XAWFS244	1 x Push button, spring to return	● Black	Start	1NO
	1 x Pilot light, integral LED - 24 to 254 V AC-DC	● Red	Blank	-
XAWFS31	1 x Push button, spring to return	● Green	Forward	1NO
	1 x Push button, spring to return	● Red	Stop	1NC
	1 x Push button, spring to return	● Green	Reverse	1NO
XAWFS37	1 x Push button, spring to return	● Green	Start	1NO
	1 x Push button, spring to return	● Red	Stop	1NC
	1 x Mushroom, spring to return Ø 40 mm	● Red	Emergency stop	1NC
XAWFS34	1 x Push button, spring to return	● Green	Start	1NO
	1 x Push button, spring to return	● Red	Stop	1NC
	1 x Pilot light, integral LED - 24 to 254 V AC-DC	● Green	Blank	-
XAWFS393	1 x Push button, spring to return	● Green	Start	1NO
	1 x Mushroom, Push-Pull Ø 40 mm	● Red	Emergency stop	1NC
	1 x Pilot light, integral LED - 24 to 254 V AC-DC	● Green	Blank	-



Any other configuration on request



Enclosure	A	B	C	D	E
XAWFS 1...	125	110	80	65	110
XAWFS 2...	125	150	80	65	150
XAWFS 3...	125	195	80	65	195
XAWFS 4...	125	240	80	65	240
XAWFS 5...	125	295	80	65	295
XAWFS 6...	125	330	80	65	330

Other dimensions on request