



This extensive range of products and components is well known worldwide for its reliability, its design and the many opportunities in the choice of heads.

They allow the customers to implement and operate them in numerous places of their process.

TECHNICAL DATA

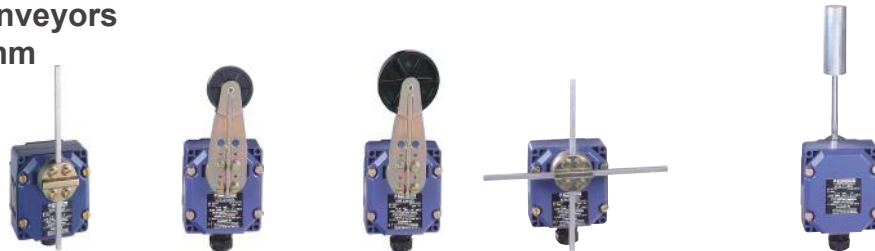
| | |
|--------------------------|--|
| Material (body) | Zamac |
| IP rating | IP65 according to EN/IEC 60529 |
| Temperature range | XCKW: -40°C ... +60°C XCR.W: -30°C ... +60°C |
| Certificates | INERIS 03ATEX0038X INERIS 03ATEX0039X |
| Marking | IECEX INE 12.0029X IECEX INE 12.0030X |
| Contact block | II 2 GD Ex d e IIC T6 Gb Ex tb IIIC T85°C Db |
| | 500 V, 3A |

For lifting equipment, conveyors, handling devices
Fixing distance 61.5 mm



| Actuator type | Metallic rods in cross | Metallic rods in cross, reversed head |
|-----------------------|---|---------------------------------------|
| Two 2-pole NC + NC | XCKWMMR54D1H29 | XCKWMMR54D2H29 |
| Actuation speed | 1.5 m/s | |
| Mechanical durability | 2 million operations | |
| Contact type | Staggered, slow break | |
| Cable entry | 2 entries with blind plug, 1 entry with cable gland ISO M20 for cable Ø 8 to 13mm | |

For lifting equipment, conveyors
Fixing distance 85 x 75 mm



| Actuator type | Square rod 6 mm spring return position | Thermoplastic roller lever Ø 30 mm | Thermoplastic roller lever Ø 50 mm | Metallic square rod in cross, stay put | Conveyor belt shift monitoring Lever galvanized | Conveyor belt shift monitoring Lever in stainless steel |
|---|---|------------------------------------|------------------------------------|--|---|---|
| Two 2-pole NC + NO contacts, both operate in each direction | XCRAW111 | XCRAW121 | XCRAW151 | XCREW181 (2) | | |
| Two 2-pole NC + NO contacts, one operates in each direction | XCRBW111 | XCRBW121 | XCRBW151 | XCRFW171 (3) | | |
| 2 single contacts "O + C" | | | | | XCRTW115 | XCRTW215 |
| Actuation speed | 1.5 m/s | | | | | |
| Mechanical durability | 10 million operations | | | | 0.3 million operations | |
| Contact type | Snap action | | | | | |
| Cable entry | 1 entry ISO M20 for cable of Ø 8 to 13 mm | | | | | |

(2) Metallic rods in cross
 (3) Metallic rods in "T"

Overall use
Fixing distance 41 mm



| Actuator type | Metal end plunger | Steel roller plunger | Thermoplastic roller lever | Thermoplastic roller lever | "Cat's whisker" |
|-----------------------|---|----------------------|----------------------------|----------------------------|-----------------------|
| NO + NC | XCKWM2110H29 | XCKWM2102H29 | XCKWM2121H29 | XCKWM2115H29 | XCKWM2106H29 |
| Actuation speed | 0.5 m/s | | 1.5 m/s | | 0.5 m/s |
| Mechanical durability | 20 million operations | | | | 10 million operations |
| Contact type | Snap action | | | | |
| Cable entry | 2 entries with blind plug, 1 entry with cable gland ISO M20 for cable Ø 8 to 13mm | | | | |

Compact range Fixing distance 20 mm



| Actuator type | Metal end plunger | Booted metal end plunger | Steel roller plunger | Plastic roller, horizontal actuation | Plastic roller, vertical actuation | Plastic roller, vertical or horizontal actuation |
|-----------------|-----------------------------------|--------------------------|----------------------|--------------------------------------|------------------------------------|--|
| NC + NC | XCKWD2110P16 | XCKWD2111P16 | XCKWD2102P16 | XCKWD2121P16 | XCKWD2127P16 | XCKWD2128P16 |
| NO + NC | XCKWD2910P16 | XCKWD2911P16 | XCKWD2902P16 | XCKWD2921P16 | XCKWD2927P16 | XCKWD2928P16 |
| Actuation speed | 0.5 m/s | | | 1 m/s | | |
| Durability | 15 million operations | | 10 million operation | 15 million operations | | |
| Type of contact | Snap action | | | | | |
| Cable entry | 1 entry M16 for cable Ø 5 to 8 mm | | | | | |

Compact range Fixing distance 20mm



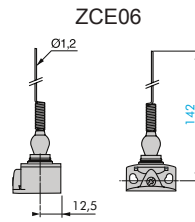
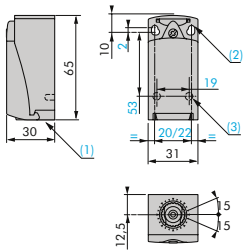
| Actuator type | Thermoplastic roller lever | Thermoplastic roller lever Ø 50 mm | Variable length plastic roller lever | Variable length plastic roller Ø 50 mm | "Cat's wisker" | M18 head Metal end plunger | M18 steel roller end plunger |
|-----------------|---------------------------------------|------------------------------------|--------------------------------------|--|----------------|----------------------------|------------------------------|
| NO + NC | XCKWD2118P16 | XCKWD2139P16 | XCKWD2145P16 | XCKWD2149P16 | XCKWD2106P16 | XCKWD21H0P16 | XCKWD21H2P16 |
| NO + NC | XCKWD2918P16 | XCKWD2939P16 | XCKWD2945P16 | XCKWD2949P16 | XCKWD2906P16 | XCKWD29H0P16 | XCKWD29H2P16 |
| Actuation speed | 1.5 m/s | | | | 1 m/s | 0.5 m/s | |
| Durability | 10 million operations | | | | 5 million | 10 million operations | |
| Type of contact | Snap action | | | | | | |
| Cable entry | 1 entry ISO M16 for cable Ø 5 to 8 mm | | | | | | |

Compact range Fixing distance 30 x 60 mm



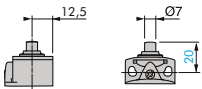
| Actuator type | Metal end plunger | Steel roller plunger | Steel roller lever | Thermoplastic roller lever | Variable length thermoplastic roller lever | Round lever Ø 6 mm polyamide L = 200 mm |
|-----------------|--|----------------------|-----------------------|----------------------------|--|---|
| Contact NO + NC | XCKWJ2161H29 | XCKWJ2167H29 | XCKWJ210513H29 | XCKWJ210511H29 | XCKWJ210541H29 | XCKWJ210559H29 |
| Actuation speed | 0.5 m/s | 1 m/s | 1.5 m/s | | | |
| Durability | 30 million operations | 25 million operation | 30 million operations | | 20 million operations | |
| Type of contact | Snap action | | | | | |
| Cable entry | 1 entry ISO M20 for cable Ø 8 to 13 mm | | | | | |

XCKWD - Compact range

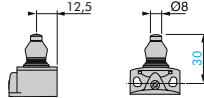


- 1) 1 entry ISO M16 x 1.5 for cable gland
 2) 2 slotted holes $\varnothing 4.3 \times 6.3$ mm and fixing distance 22 mm or 2 holes $\varnothing 4.3$ mm and fixing distance 20 mm
 3) 2 holes for mounting $\varnothing 3$ mm, depth 4 mm

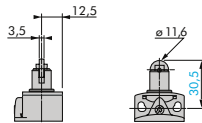
ZCE10



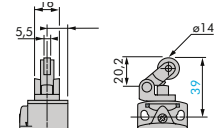
ZCE11



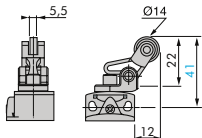
ZCE02



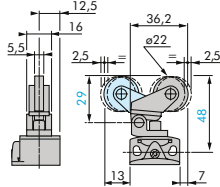
ZCE21



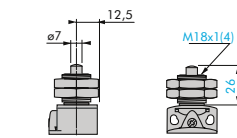
ZCE27



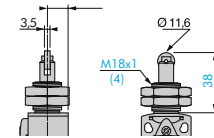
ZCE28



ZCEH0

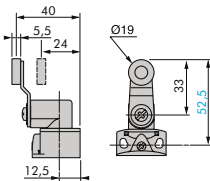


ZCEH2

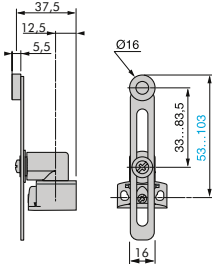


4) Screw of 3,5 mm

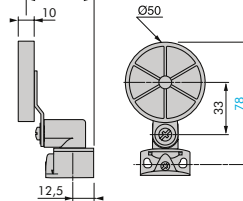
ZCE01 + ZCY18



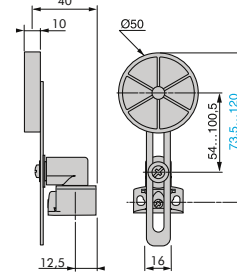
ZCE01 + ZCY45



ZCEH01 + ZCY39

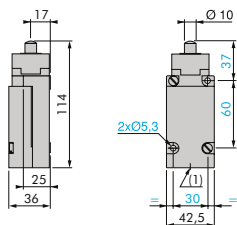


ZCE01 + ZCY49

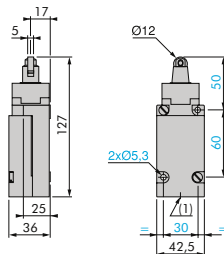


XCKWJ - Classique range

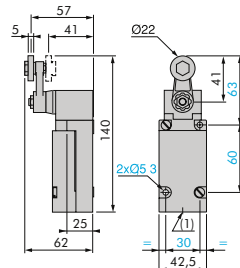
XCKWJ2161H29



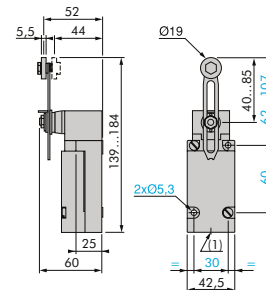
XCKWJ2167H29



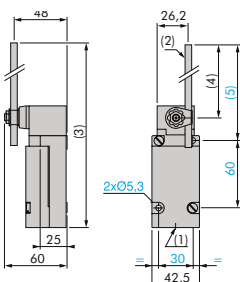
XCKWJ210513H29
XCKWJ210511H29



XCKWJ210541H2



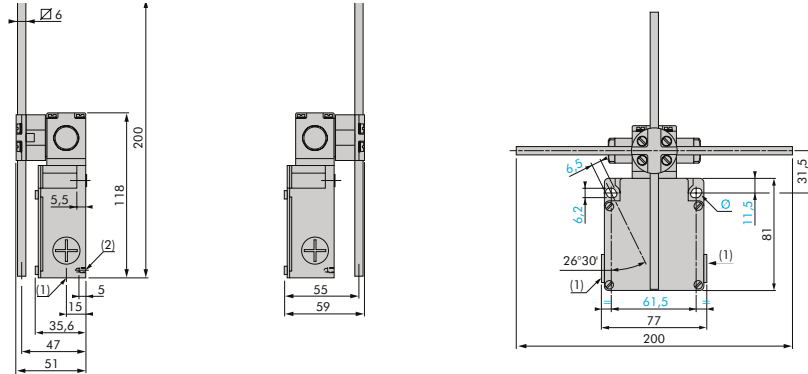
XCKWJ210559H29



- 1) 1 entry ISO M20 x 1.5 for cable gland
 2) Lever $\varnothing 6$ mm, length 120 mm
 Ø) 2 slotted holes 5.3×7.3 mm

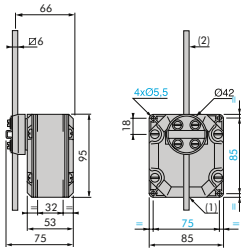
XCKWMR, XCRA/B/TW

XCKWMR54D1H29 / XCKWMR54D2H29

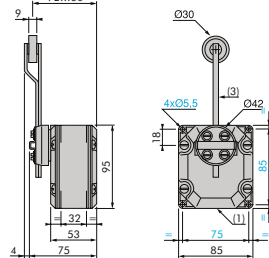


- 1) 3 entries ISO M20 x 1.5 for cable gland
- 2) 2 centring holes \varnothing 3.9 mm
- Ø) 2 slotted holes 6.2 x 6.5 mm

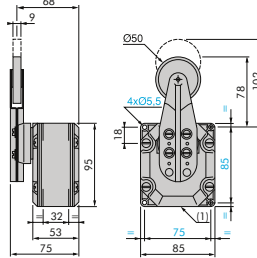
XCRAW111
XCRBW111



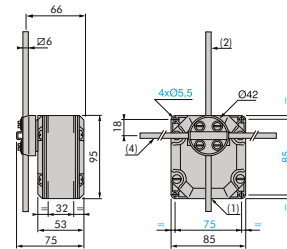
XCRAW121
XCRBW121



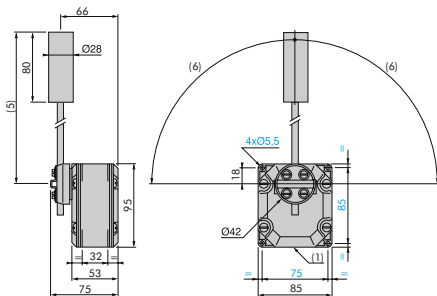
XCRAW151
XCRBW151



XCREW181
XCREW171



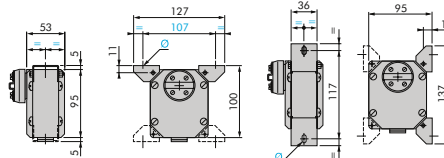
XCRTW115 / XCRTW215



Fixing

Horizontal position

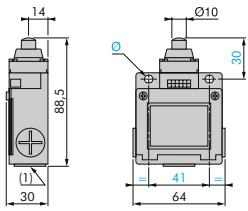
Vertical position



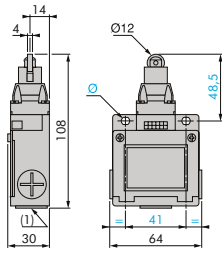
- 1) 1 entry ISO M20 x 1.5 for cable gland
- 2) Lever length: 200 mm
- 3) Lever length + roller: 160 mm
- 4) Lever length: 300 mm for XCRPW and 200 mm for XCREW
- 5) Max: 200 mm - Min: 83 mm
- 6) Max: 90°
- Ø) 2 slotted holes 6.2 x 6.5 mm

XCKWM - Classique range

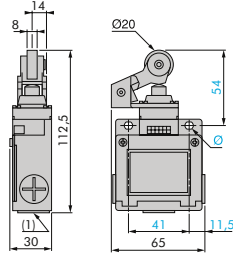
XCKWM2110H29



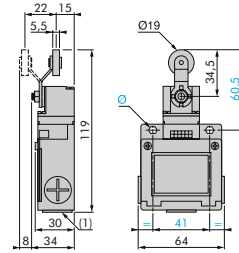
XCKWM2102H29



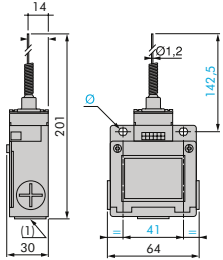
XCKWM2121H29



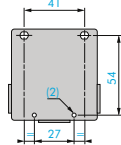
XCKWM2115H29



XCKWM2106H29



arrière



- 1) 3 entries ISO M20 x 1.5 for cable gland
- 2) 2 holes x Ø 4
- Ø) 2 slotted holes 5.2 x 6.2 mm