



- 100% encapsulated, maintenance free design requiring only visual inspection to IEC/EN 60079-17
- 10 years operational warranty* assures favourable total cost of ownership
- Easy and flexible installation via slide guides
- Seawater resistant anodized aluminium (NORSOK 121)
- Tempered glass, very high impact resistant, IK10 (20 joules)
- High light output efficiency (>80%) - Less luminaires required for same lighting level
- Optional battery powered, 90/180 minutes functionality, battery functionality -40°C to +30°C - Emergency light by LEDs
- No condensation
- Self-cleaning glass
- Black start for unmanned platforms

TECHNICAL DATA

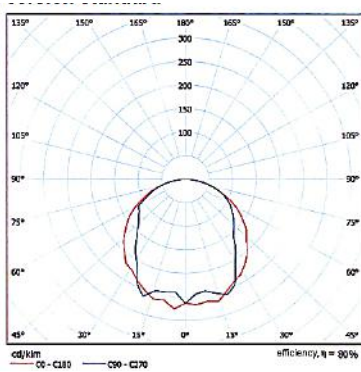
Material	Anodized aluminium seawater resistant in accordance with Norsok 121 Tempered glass high impact resistance
IP rating	IP68 according to EN/IEC 60529
Temperature range	-20°C ... +55°C -20°C ... +30°C for emergency function
Certificates	DEKRA 11ATEX0133 IECEX DEK11.0075
Marking	ATEX II 2 GD Ex e mb II T6 ... T5 Ex tD A21 T80°C ... T100°C IECEX II 2 GD Ex e mb IIC T6 ... T5 Ex tD A21 T80°C ... T100°C
Standards	ROHS 2002/95/EC REACH 2006/121/EC HACCP by DEKRA 06540-QUA/Ex
Impact rating	IK 10 (20 joules)
Visual inspection	Visual in accordance with EN 60079-17
Lamps	Pre-mounted long life, colour 4000K
Voltage	220-264 VAC 50/60Hz
Ballast	Electronic with end of life protection preheated start
Emergency batteries	Disconnecting possibility during installation by "B" terminal
Battery life time	300 cycles, automatic random, test each 100 days
Entries	2 x M25 cable glands
Vibration	According to IEC60721-2-3 Ed and IEC68-2-6 Frequency range: 1-150 Hz - Sweep rate: 1 octave per minute Amplitude: 5 mm (1 ... 10 Hz) - Sweep cycle: 10 Acceleration: 2 gn (10 ... 150 Hz) - Direction: 3

Total cost of ownership

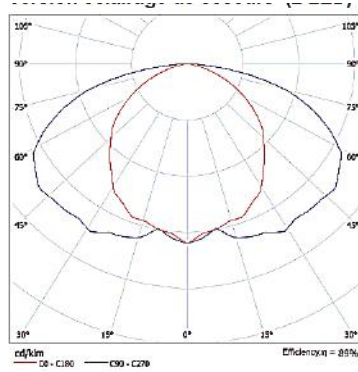
The benefits of installing TNAML can be shown by using a Total Cost of Ownership tool. The calculation shows the LIFETIME COST SAVINGS using the data of the client.

Light distribution curve

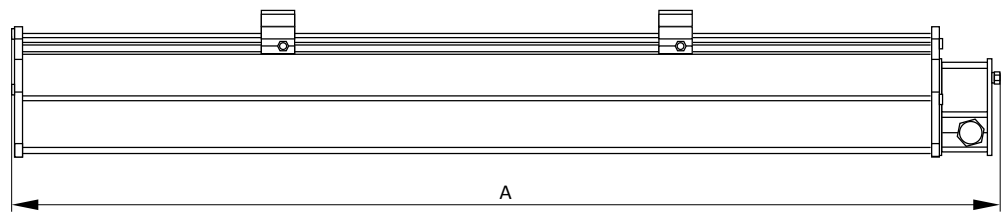
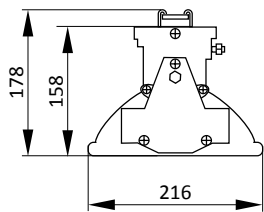
Standard lighting



Emergency lighting



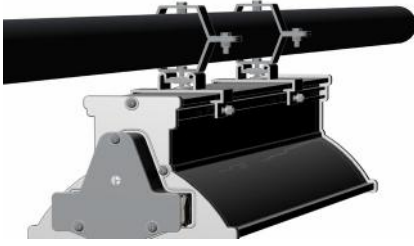
Outline dimensions (mm)



Product code	Zone of use	A (mm)	Emergency light	Watt	Voltage	Weight	Lumen
TNAMLG218	GAS 1 & 21	738	-	2 x 18 W	220-264 VAC	7.1 kg	2600
TNAMLG236	GAS 1 & 21	1348	-	2 x 36 W	220-264 VAC	9.7 kg	6000
TNAMLG258	GAS 1 & 21	1648	-	2 x 58 W	220-264 VAC	12.4 kg	10400
TNAMLD218	DUST 2 & 22	738	-	2 x 18 W	220-264 VAC	7.1 kg	2600
TNAMLD236	DUST 2 & 22	1348	-	2 x 36 W	220-264 VAC	9.7 kg	6000
TNAMLD258	DUST 2 & 22	1648	-	2 x 58 W	220-264 VAC	12.4 kg	10400
TNAMLG218-E1	GAS 1 & 21	898	90 minutes, 2 LEDs	2 x 18 W	220-264 VAC	9.4 kg	2600
TNAMLG218-E2	GAS 1 & 21	898	180 minutes, 2 LEDs	2 x 18 W	220-264 VAC	9.4 kg	2600
TNAMLG236-E1	GAS 1 & 21	1348	90 minutes, 2 LEDs	2 x 36 W	220-264 VAC	11.3 kg	6000
TNAMLG236-E2	GAS 1 & 21	1348	180 minutes, 2 LEDs	2 x 36 W	220-264 VAC	11.3 kg	6000
TNAMLG258-E1	GAS 1 & 21	1648	90 minutes, 2 LEDs	2 x 58 W	220-264 VAC	14.2 kg	10400
TNAMLG258-E2	GAS 1 & 21	1648	180 minutes, 2 LEDs	2 x 58 W	220-264 VAC	14.2 kg	10400
TNAMLD218-E1	DUST 2 & 22	898	90 minutes, 2 LEDs	2 x 18 W	220-264 VAC	9.4 kg	2600
TNAMLD218-E2	DUST 2 & 22	898	180 minutes, 2 LEDs	2 x 18 W	220-264 VAC	9.4 kg	2600
TNAMLD236-E1	DUST 2 & 22	1348	90 minutes, 2 LEDs	2 x 36 W	220-264 VAC	11.3 kg	6000
TNAMLD236-E2	DUST 2 & 22	1348	180 minutes, 2 LEDs	2 x 36 W	220-264 VAC	11.3 kg	6000
TNAMLD258-E1	DUST 2 & 22	1648	90 minutes, 2 LEDs	2 x 58 W	220-264 VAC	14.2 kg	10400
TNAMLD258-E2	DUST 2 & 22	1648	180 minutes, 2 LEDs	2 x 58 W	220-264 VAC	14.2 kg	10400

Options

Pole mounting brackets



Ceiling mounting brackets



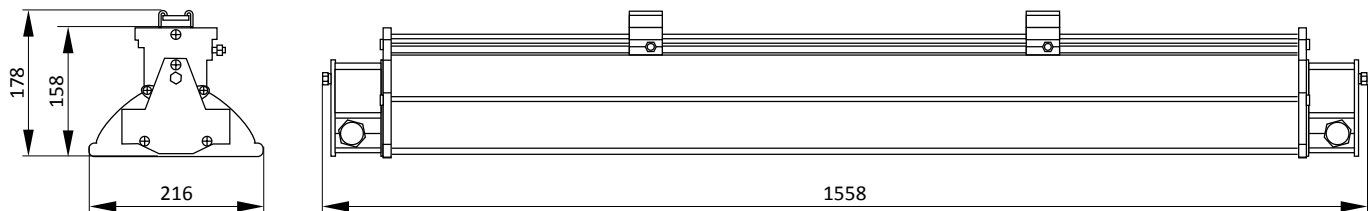
Suspended mounting brackets



Frame for recessed installation in modular ceiling systems



Outline dimensions with wiring through 2 junction boxes



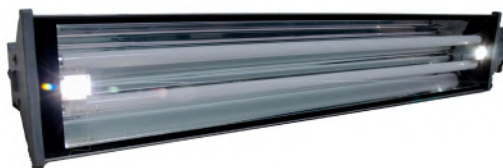
Options

Product code	Description
TNAML V1	110/120 VAC - 50/60 Hz - ONLY for 2 x 18 W and 2 x 36 W
TNAML L1	Lamp colour 3000K
TNAML L2	Lamp colour 6500K
TNAML E1	Electrical connection by 8 meter permanent flying lead, braided
TNAML M1	Pole mounting brackets
TNAML M2	Ceiling mounting brackets
TNAML M3	Suspended mounting brackets
TNAML M4	Frame in painted steel for recessed installation in modular ceiling systems
TNAML M5	Frame in stainless steel for recessed installation in modular ceiling systems
TNAML G1	Glass for use accordance with HACCP environment
TNAML G2	Frosted glass avoiding glare for low mounted fixtures
TNAML S1	Safety wire for installation into a fixing arrangement on the light fitting
TNAML S2	2 terminal boxes including through wiring 2.5 mm ²
TNAML B1	Black start emergency light - Wireless "Black Start" function for manned/unmanned functionality
TNAML C1	Ex e Cable gland (separate package)
TNAML H1	HACCP for food industry

Standard serie



Emergency light series



Sliding device for fast and easy mounting



Junction box

