

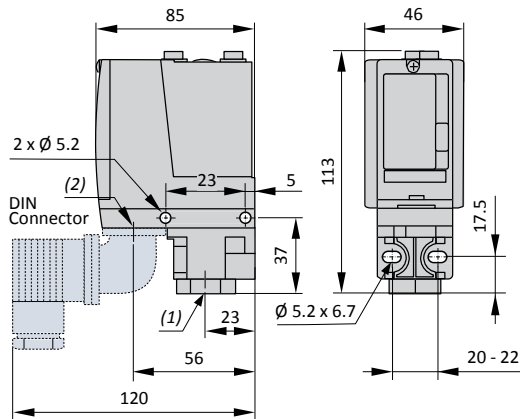


With a wide range of pressures, from 0.1 to 500 bars, the XMLW pressure switches allow to control fluids in hazardous areas. They meet the highest level of protection for the explosive atmospheres.

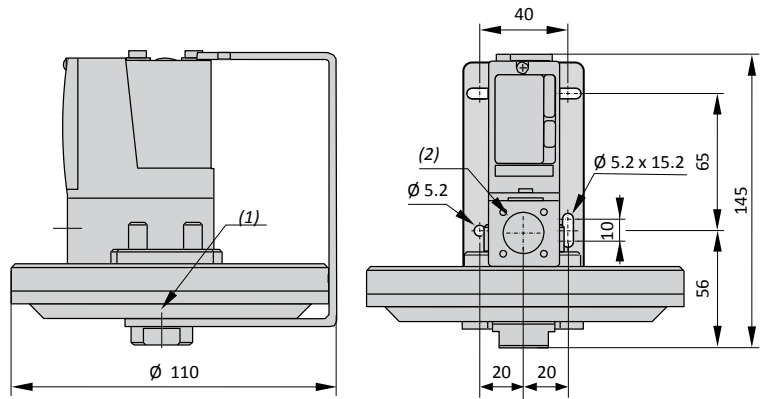
TECHNICAL DATA

| | |
|---------------------------------|----------------------------------------------------------------------------|
| Material | Zamac |
| IP rating | IP66 according to EN/IEC 60529 |
| Temperature range | -20°C ... +60°C |
| Certificate | INERIS 04ATEX0007 |
| Marking | For Tfluid < +65°C II 2 GD Ex db eb IIC T6 Gb Ex tb IIIC T85°C Db |
| Rated thermal current | 6 A |
| Insulation voltage | 250 V |
| Contact block | Single-pole snap action NO+NC |
| Electrical connection | Screw terminal block, cable entry ISO M20 for cable Ø 8 to 13 mm |
| Short circuit protection | By fuse 6 A gG (gl) to be installed outside the Ex area |
| Hydraulic connection | 1/4" gas female - Other on request |

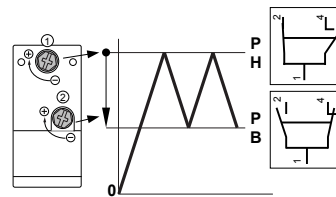
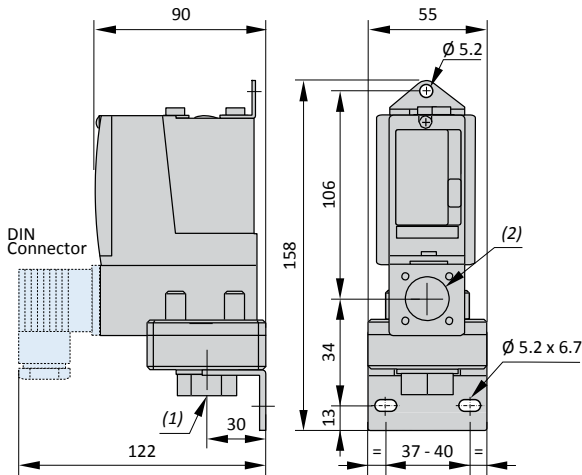
XMLW-C010/C020/035/070/160/300/500



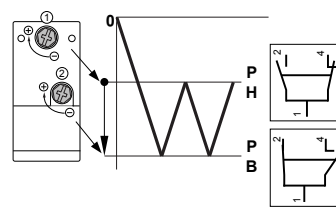
XMLW-C001



XMLW-CM02T2S12, XMLW-C004B2S12, XMLW-C004C2S12



**XMLW-C004B2S12,
XMLW-C004C2S12,
XMLW-C010 / C020 / 035
XMLW-070 / 160 / 300 / 500
XMLW-C001**



XMLW-CM02T2S12

(1) Fluid entry G 1/4"
(2) Electrical connection M20 x 1.5

| Pressure switch with display | Gauge | Setting range upper threshold (ph) | Fluids controlled | Possible differential (add to PB to get PH) | | |
|------------------------------|---------|------------------------------------|----------------------------|---------------------------------------------|-------------------|-------------------|
| | | | | Min. low setting | Min. high setting | Max. high setting |
| XMLW-CM02T2S12 | - 1 bar | - 1 ... - 0.14 bar | Hydraulic oils, water, air | 0.13 bar | 0.14 bar | 0.8 bar |
| XMLW-C001R2S12 | 1 bar | 0.05 ... 1 bar | Hydraulic oils, air | 0.03 bar | 0.04 bar | 0.8 bar |
| XMLW-C001S2S12 | 1 bar | 0.005 ... 1 bar | Water, corrosives fluids | 0.03 bar | 0.04 bar | 0.8 bar |
| XMLW-C004B2S12 | 4 bar | 0.3 ... 4 bar | Hydraulic oils, water, air | 0.17 bar | 0.15 bar | 2.5 bar |
| XMLW-C004C2S12 | 4 bar | 0.3 ... 4 bar | Corrosive fluids | 0.17 bar | 0.15 bar | 2.5 bar |
| XMLW-C010B2S12 | 10 bar | 0.7 ... 10 bar | Hydraulic oils, water, air | 0.45 bar | 0.70 bar | 8 bar |
| XMLW-C010C2S12 | 10 bar | 0.7 ... 10 bar | Corrosive fluids | 0.45 bar | 0.70 bar | 8 bar |
| XMLW-C020B2S12 | 20 bar | 1.3 ... 20 bar | Oil, water, air | 0.7 bar | 1 bar | 11 bar |
| XMLW-C020C2S12 | 20 bar | 1.3 ... 20 bar | Corrosive fluids | 0.7 bar | 1 bar | 11 bar |
| XMLW-C035B2S12 | 35 bar | 3.5 ... 35 bar | Hydraulic oils, water, air | 1 bar | 1.5 bar | 22 bar |
| XMLW-C035C2S12 | 35 bar | 3.5 ... 35 bar | Corrosive fluids | 1 bar | 1.5 bar | 22 bar |
| XMLW-C070D2S12 | 70 bar | 7 ... 70 bar | Hydraulic oils, air | 4.5 bar | 8.9 bar | 60 bar |
| XMLW-C070E2S12 | 70 bar | 7 ... 70 bar | Fresh water, sea water | 4.5 bar | 8.9 bar | 60 bar |
| XMLW-C070N2S12 | 70 bar | 7 ... 70 bar | Corrosive fluids | 4.5 bar | 8.9 bar | 60 bar |
| XMLW-C160D2S12 | 160 bar | 12 ... 160 bar | Hydraulic oils, air | 9 bar | 21 bar | 110 bar |
| XMLW-C160E2S12 | 160 bar | 12 ... 160 bar | Fresh water, sea water | 9 bar | 21 bar | 110 bar |
| XMLW-C160N2S12 | 160 bar | 12 ... 160 bar | Corrosive fluids | 9 bar | 21 bar | 110 bar |
| XMLW-C300D2S12 | 300 bar | 22 ... 300 bar | Hydraulic oils, air | 16 bar | 35 bar | 240 bar |
| XMLW-C300E2S12 | 300 bar | 22 ... 300 bar | Fresh water, sea water | 16 bar | 35 bar | 240 bar |
| XMLW-C300N2S12 | 300 bar | 22 ... 300 bar | Corrosive fluids | 16 bar | 35 bar | 240 bar |
| XMLW-C500D2S12 | 500 bar | 30 ... 500 bar | Hydraulic oils, air | 19 bar | 52 bar | 340 bar |
| XMLW-C500E2S12 | 500 bar | 30 ... 500 bar | Fresh water, sea water | 19 bar | 52 bar | 340 bar |
| XMLW-C500N2S12 | 500 bar | 30 ... 500 bar | Corrosive fluids | 19 bar | 52 bar | 340 bar |